

KANSAS SNAP-ED 2020 Impact Report

K-STATE
Research and Extension



In accordance with Federal civil rights law and U.S. Department of Agriculture (USDA) civil rights regulations and policies, the USDA, its Agencies, offices, and employees, and institutions participating in or administering USDA programs are prohibited from discriminating based on race, color, national origin, sex, religious creed, disability, age, political beliefs, or reprisal or retaliation for prior civil rights activity in any program or activity conducted or funded by USDA.

Persons with disabilities who require alternative means of communication for program information (e.g. Braille, large print, audiotape, American Sign Language, etc.), should contact the Agency (State or local) where they applied for benefits. Individuals who are deaf, hard of hearing or have speech disabilities may contact USDA through the Federal Relay Service at (800) 877-8339. Additionally, program information may be made available in languages other than English.

To file a program complaint of discrimination, complete the USDA Program Discrimination Complaint Form, (AD-3027) found online at: How to File a Complaint, and at any USDA office, or write a letter addressed to USDA and provide in the letter all of the information requested in the form. To request a copy of the complaint form, call (866) 632-9992. Submit your completed form or letter to USDA by:

(1) mail:
U.S. Department of Agriculture
Office of the Assistant Secretary for Civil Rights
1400 Independence Avenue, SW
Washington, D.C. 20250-9410;

(2) fax: (202) 690-7442; or

(3) email: program.intake@usda.gov

This institution is an equal opportunity provider.

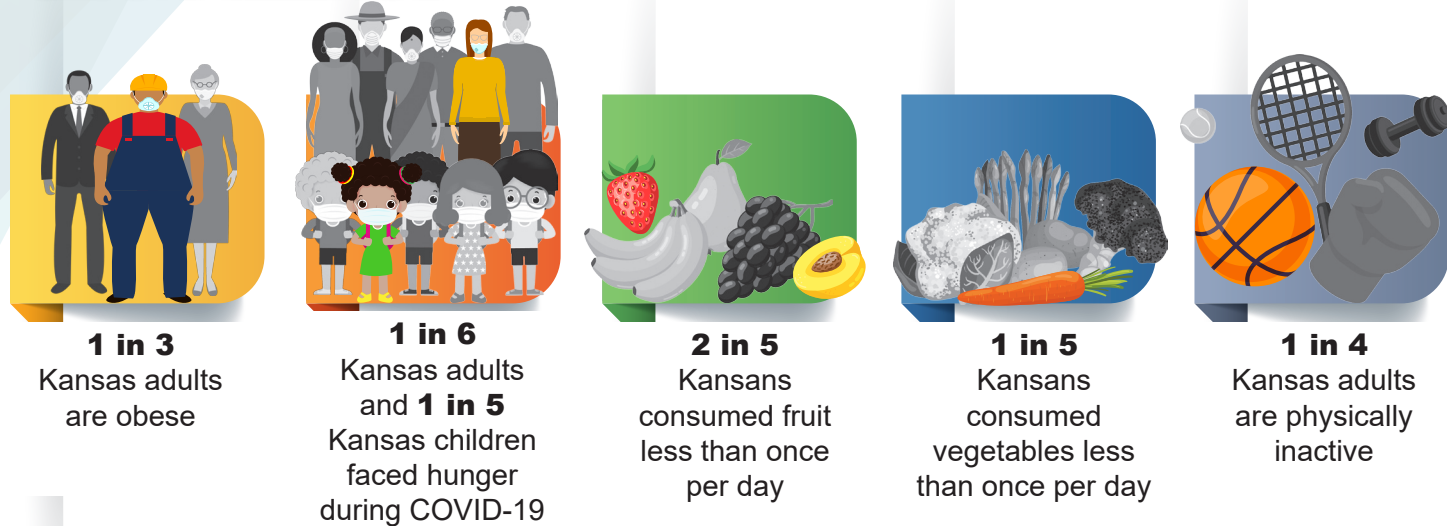
Contact Information
Lisa Ross, RD, LD
Kansas SNAP-Ed Program Coordinator

Kansas SNAP-Education programming is coordinated and delivered by Kansas State Research and Extension in **59 counties and 4 Federally Recognized Tribes** across Kansas. SNAP-Education provided direct nutrition education to youth, adults, and seniors and partnered with local agencies and organizations using multi-level intervention and community engagement to exert greater impacts among Kansans.

Over **46,000 Kansans** were reached by SNAP-Education programs through multi-level intervention.

An average of **206,162 Kansans** per month received SNAP benefits.

theCHALLENGE

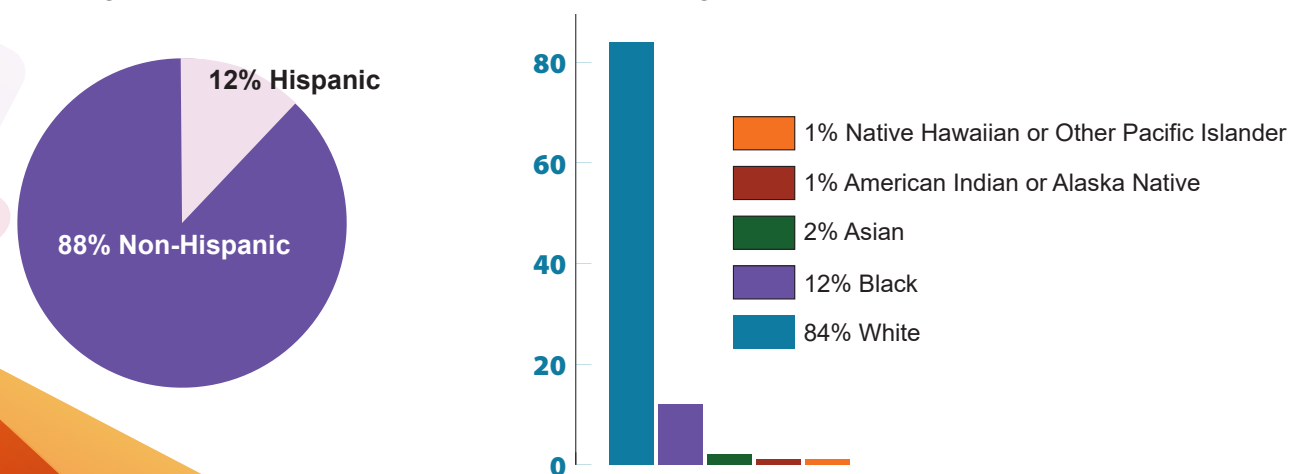


theSOLUTION



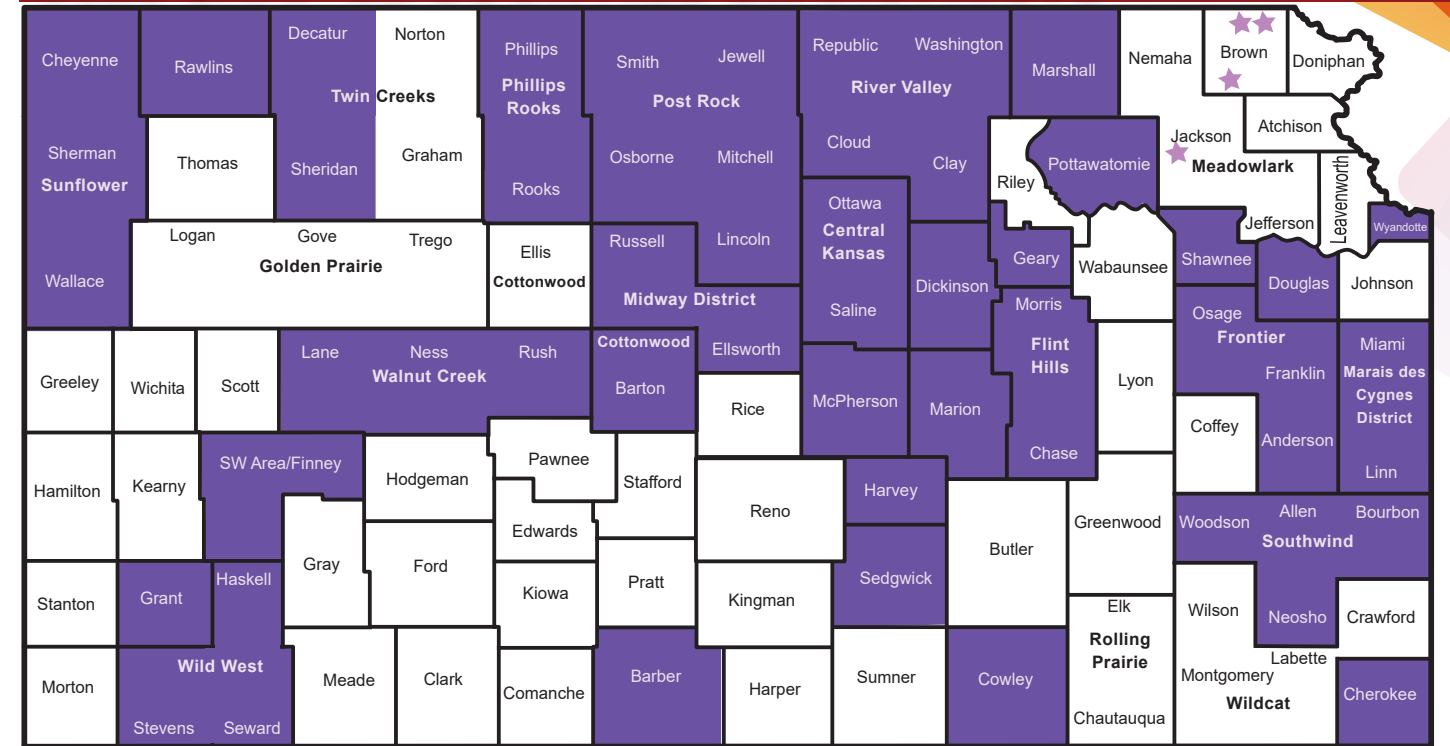
theOUTCOMES

We empower limited resources Kansans to make healthy food choices and become physically active by providing a series of direct education lessons, reaching over 5,500 Kansans.



AND

2020 SNAP-Ed COUNTIES OR DISTRICTS



★ Tribal Food System Project: Sac & Fox Nation of Missouri in Kansas and Nebraska, Iowa Tribe of Kansas and Nebraska, Kickapoo Tribe in Kansas, Prairie Band Potawatomi Nation

■ SNAP-Ed County or District

COMMUNITY PROJECTS



After participating in the Kansas SNAP-Education Program, participants of all ages made behavioral changes to improve their health.

